



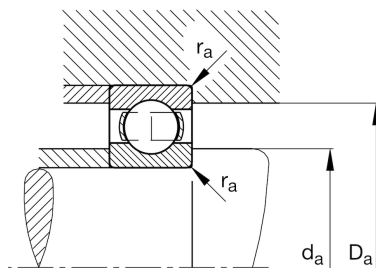
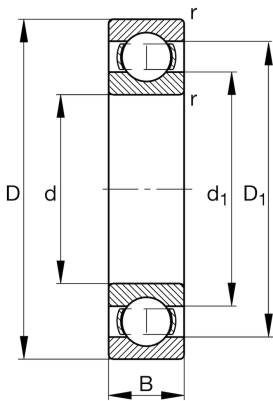
FAG

6311

Deep groove ball bearing

Schaeffler ID:
0167237240000Deep groove ball bearing 63, single row,
steel sheet metal cage

Technical information

**Main Dimensions & Performance Data**

d	55 mm	Bore diameter
D	120 mm	Outside diameter
B	29 mm	Width
C_r	83,000 N	Basic dynamic load rating, radial
C_{0r}	47,500 N	Basic static load rating, radial
C_{ur}	3,250 N	Fatigue load limit, radial
n_G	8,500 1/min	Limiting speed
n_{gr}	7,100 1/min	Reference speed
	1.329 kg	Weight

Dimensions

r_{min}	2 mm	Minimum chamfer dimension
D_1	101.1 mm	Shoulder diameter outer ring
d_1	75.2 mm	Shoulder diameter inner ring

Mounting dimensions

$d_{a min}$	66 mm	Minimum diameter shaft shoulder
$D_{a max}$	109 mm	Maximum diameter of housing shoulder
$r_{a max}$	2 mm	Maximum fillet radius

Calculation factors

f_0	12.9	Calculation factor
-------	------	--------------------

Temperature range

T_{min}	-30 °C	Operating temperature min.
T_{max}	150 °C	Operating temperature max.